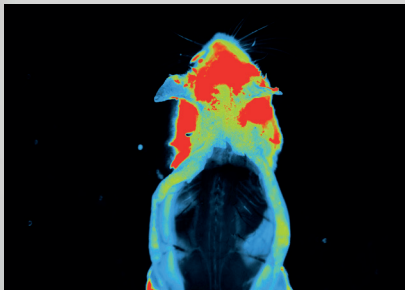
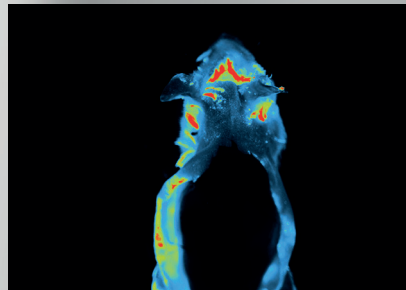


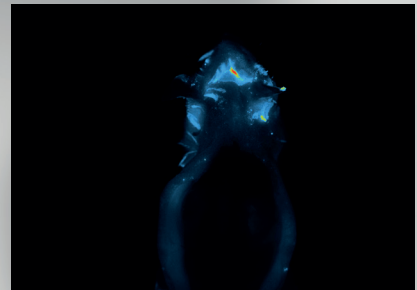
	<b>BT100</b>	<b>FT100</b>	<b>BT500</b>	<b>FT500</b>
<b>Camera</b>	DarQ-11 1" Scientific CCD Sensor 2160x2160 (4.6 MP)	DarQ-11 1" Scientific CCD Sensor 2160x2160 (4.6 MP)	DarQ-11 1" Scientific CCD Sensor 2160x2160 (4.6 MP)	DarQ-11 1" Scientific CCD Sensor 2160x2160 (4.6 MP)
<b>Absolute Cooling</b>	-90°C	-90°C	-90°C	-90°C
<b>Lens</b>	f/0.70	f/0.70	f/0.70	f/0.70
<b>Bioluminescence</b>	✓	✓	✓	✓
<b>VIS/NIR Fluorescence</b>	upgradeable	400>900nm	upgradeable	400>900nm
<b>3D Optical Tomography</b>	✓	✓	✓	✓
<b>Emission Filter-Wheel</b>	11-positions	11-positions	11-positions	11-positions
<b>Field of View</b>	12x12cm	12x12cm	6x6cm to 20x20cm	6x6cm to 20x20cm
<b>Animal Capacity</b>	1 or 3 mice	1 or 3 mice	5 mice / 3 rats	5 mice / 3 rats
<b>Heated Stage</b>	✓	✓	✓	✓
<b>Anesthesia Station</b>	Optional	Optional	Optional	Optional



*Blue excitation  
High autofluorescence*



*Green excitation  
Moderate autofluorescence*



*Near infrared excitation  
Low autofluorescence*